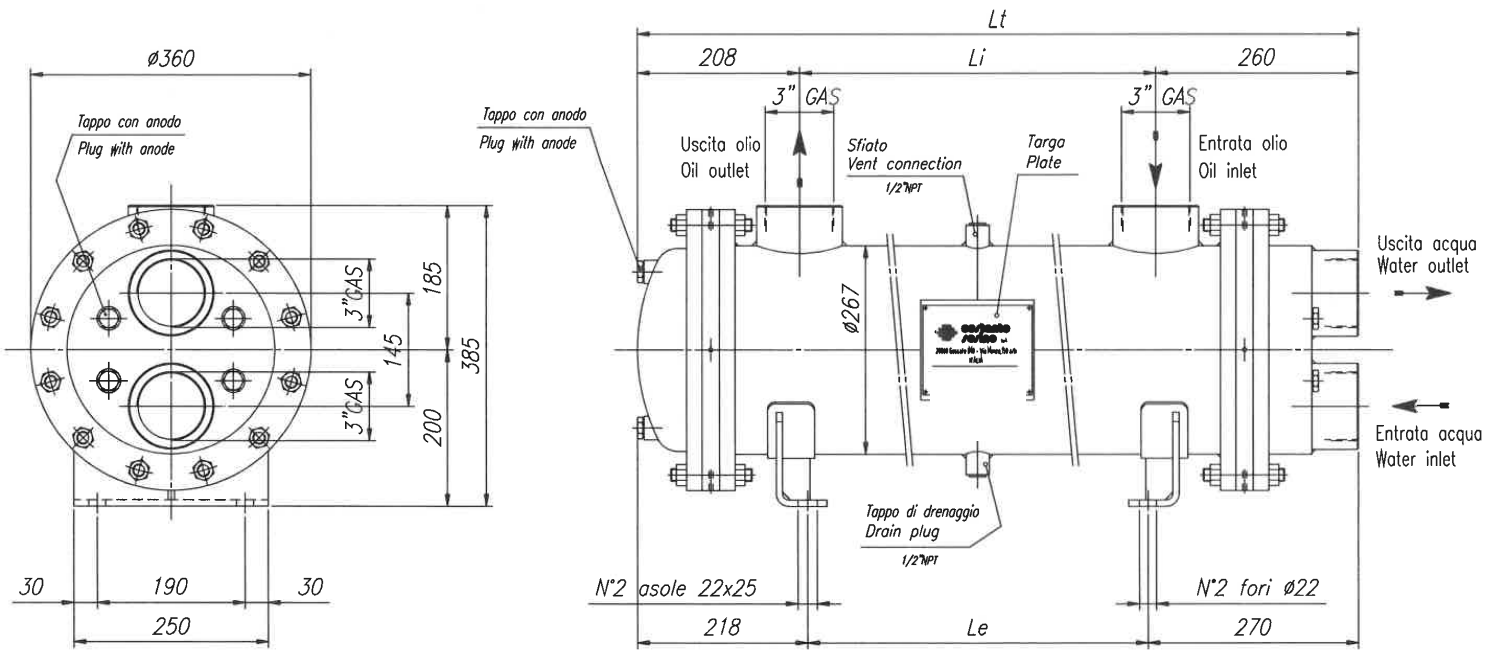


# MS 272 P

- Dimensions and technical characteristics are not binding



Static working pressure = 12 bar

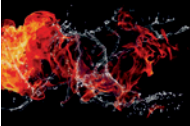
Test pressure = 15 bar

TYPE	CODE	OIL FLOW l/min	WATER FLOW l/min	kW MIN water flow		kW MAX water flow		WEIGHT kg	DIMENSIONS		
				$\Delta T_m$ 25° C	$\Delta T_m$ 25° C	$\Delta T_m$ 25° C	$\Delta T_m$ 25° C		Li	Le	Lt
MS 272 P1	2SC272P1	190-350	146-583	28	36	37	51	142	255	235	723
MS 272 P2	2SC272P2	250-410	146-583	48	60	64	78	160	385	365	853
MS 272 P3	2SC272P3	310-450	146-583	56	66	81	97	172	505	485	973
MS 272 P4	2SC272P4	320-500	146-583	93	114	135	166	214	850	830	1318
MS 272 P5	2SC272P5	400-560	146-583	124	146	181	204	236	1040	1020	1508
MS 272 P6	2SC272P6	440-600	146-583	158	182	239	277	273	1360	1340	1828
MS 272 P7	2SC272P7	460-740	146-583	214	242	335	376	327	1825	1805	2293

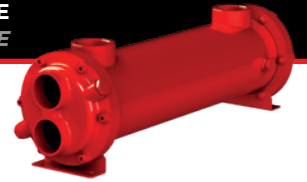
## CONSTRUCTION MATERIALS

SHELL	TUBES	END COVERS
CARBON STEEL*	COPPER*	CAST IRON*
STAINLESS STEEL AISI 304	STAINLESS STEEL AISI 304	STAINLESS STEEL AISI 304
CARBON STEEL	CuNi (water sea)	BRONZE

\*standard



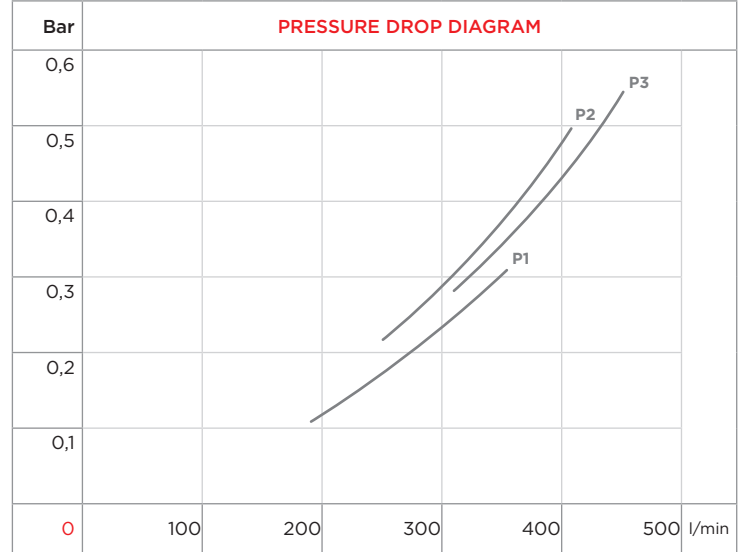
**WATER-OIL HEAT EXCHANGERS WITH TUBE BUNDLE**  
**SCAMBIATORI ACQUA-OLIO A FASCIO TUBIERO ESTRAIBILE**



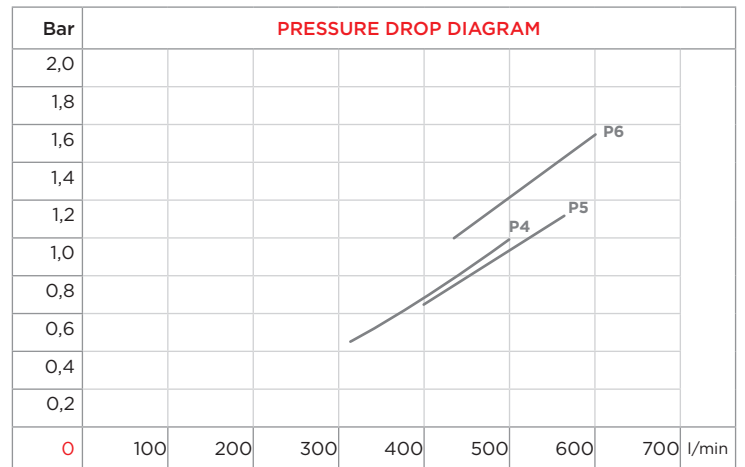
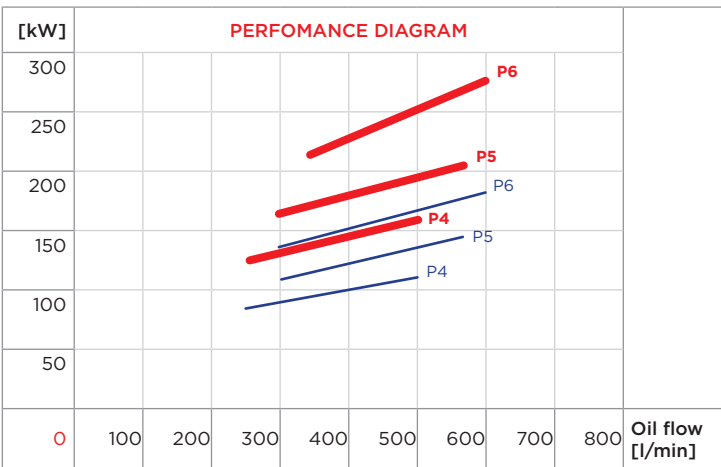
WATER FLOW RATE:



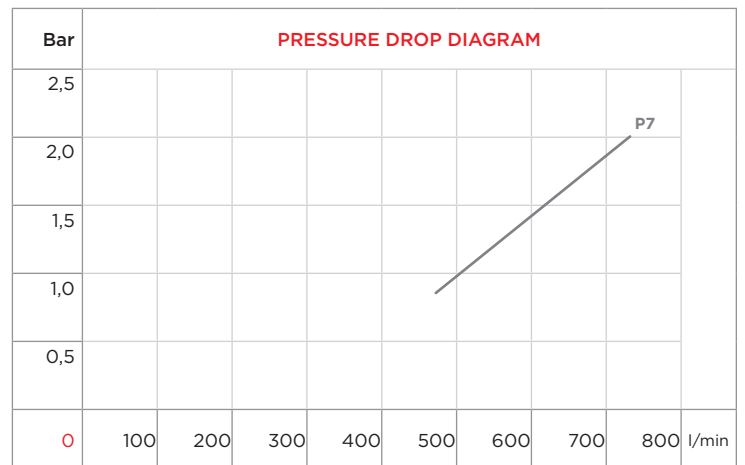
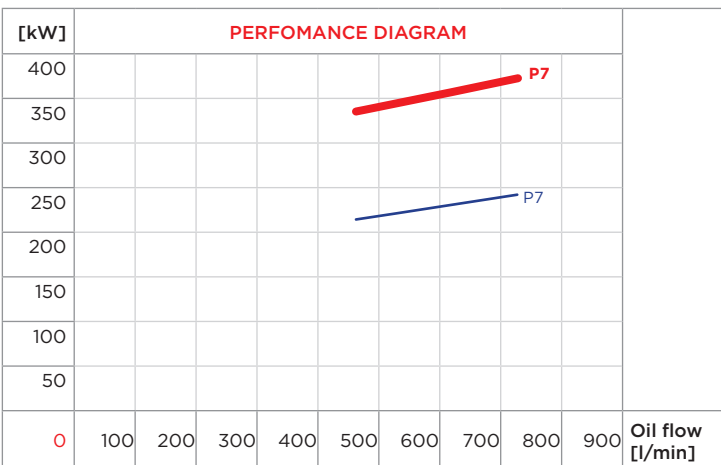
P1 P2 P3



P4 P5 P6



P7



$\Delta T_m$	10	15	20	25	30	35	40
f	2,5	1,67	1,25	1	0,83	0,71	0,63

cSt	22	30	46	68	100	150	220
f	0,4	0,6	1	1,5	2,3	3,3	4,6